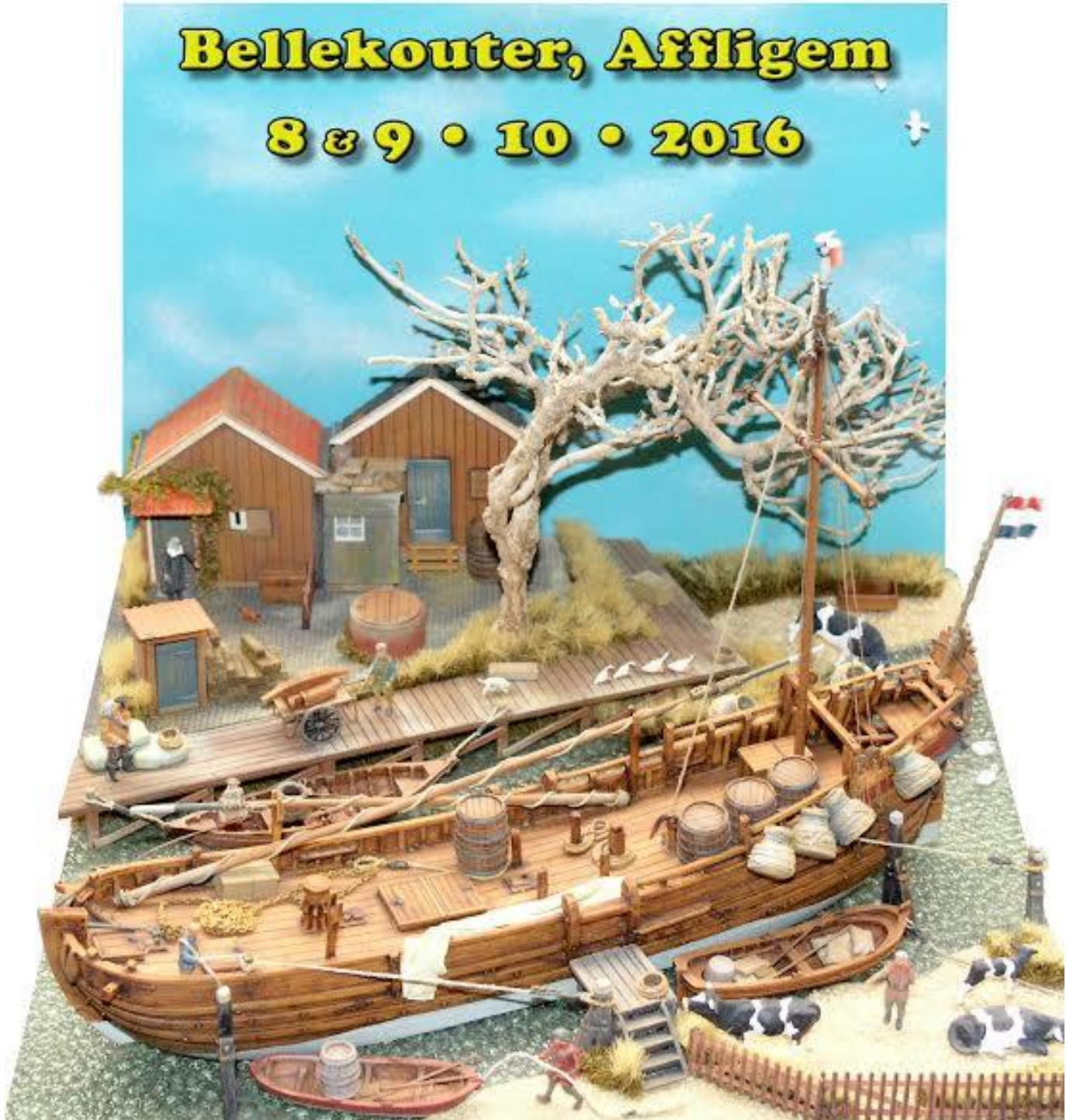


Plastic & Steel 2016

Bellekouter, Affligem

8 & 9 • 10 • 2016



Dear Friends Modellers,

The first action you take before you start reading this booklet, is to mark, in bold red, October 8 & 9, 2016, in your agenda ! IPMS Belgium & Geronimo are indeed very pleased to invite you to the Bellekouter Centre in Affligem for "**Plastic & Steel 2016**" with a.o. the annual National Convention.

This booklet provides all the information about the activities scheduled throughout the weekend. The Bellekouter Centre and its free parking are easy to reach and are only 900 m. away from the motorway exit. The exhibition hall being close to 6.000 m² we will try this year to show some other aspects of our modelling world... We have of course the traditional "**Open**" models and figures contest; every participant to the contest will receive **one free raffle ticket per registered model** and the happy winners of the "modeller's packages" will be drawn on Sunday evening during the announcement of the contest results. Moreover, it is possible to have more than one gold, silver or bronze medal awarded per category. Don't forget to register for the IPMS Belgium challenge if your models are in line with the criteria.

The National Convention is not only a contest : we have cottage industry and sale stands, swap tables, stands of clubs from Belgium and abroad, etc. Good news for the trade and swap tables: the prices are the same as last year. The **General meeting** of the IPMS Belgium members will take place on Saturday afternoon. On Saturday evening, you are invited for a **banquet** in the restaurant *Loanton*, only 300 m. away from Bellekouter, where the chef will serve an 'all-in' menu with local products.

This is in a nutshell what you can expect on 8 & 9 October. Come on over and bring the family or friends, to visit the show or as a participant... We look forward to meet you on one of these days.

Erwin HEYLENS,
President

ACTIVITIES & TARIFF

CONTEST

The models and figures contest is open to every modeller. The pre-registration form is printed at the end of this booklet; it is of course still possible to register after the deadline, space permitting, and even on Saturday morning up till 13 hr **or on Sunday morning till 10h00**, but in this case, it will cost you a bit more (see "Contest Rules"). IPMS members (national membership card) will receive a discount of about 50% providing they present a valid card. Every contest participant will receive one free raffle ticket per registered model. **Juniors participate free of charge.**

CLUB STANDS & EXHIBITION

All clubs and private exhibitors are welcome to show and demonstrate their expertise. Up to 4 tables measuring 1,80 x 0,75 m. will be provided to each participant. A prize will be awarded to the best club or exhibitor stand. Sales are not authorised at club or exhibitor stands, except for club PR material such as pens, stickers, etc. Stands are reserved for both days; clubs or exhibitors wanting to take part during one day only are allowed to do so providing they fix an arrangement with another club or exhibitor to take over the stand for the other day.

SWAP TABLES

The swap tables are reserved for modellers who want to get rid of their surplus stock. Up to 3 tables measuring 1,80 x 0,75 m. each will be provided to each participant. The rate is 30 euro per table for the weekend with a 20% discount to IPMS Belgium. Note : those desiring to participate during one day only will be provided a single table, if room available and at a flat rate of 25 euro (no discount).

COTTAGE INDUSTRY & SALE STANDS

These stands are available to the cottage industry and traders. They can bring their own stand equipment; if not, tables measuring 1,80 x 0,75 m. will be provided. All stands are automatically reserved for the whole weekend. The rate for the weekend is 30 euro per table or 15 euro per meter if own stand equipment is used with a 20% discount to IPMS Belgium members (24 euro/12 euro/m).

Notes :

1. European and Belgian legislations on the sales of products and taxes are applicable. The organisation cannot be held responsible for traders not respecting the applicable legislation (VAT a.o.).

ELECTRICITY

Is available on request. Please notify on the registration form, thank you. Do not forget to bring your own extension cables ! Rates for the weekend: free up to 500 W ; 10 € up to 1.000 W ; 15 € up to 1.500 W ; add 5 € for each additional slice of 500 W.

ADMISSION & SECURITY

ADMISSION : The admission fee is set at 4,00 € per person and per day. Admission is free for IPMS members (national membership card !) upon showing the membership card and children under 12. Clubs with a stand, traders and swap tables participants will be provided with a limited number of free admission bracelets.

SECURITY : In order to guarantee the safeguard of the exhibited models, the Bellekouter premises will be guarded during the nights of October 7 & 8. The participants are responsible for the security of their own stand during the opening hours.

It is strictly forbidden to smoke in the Bellekouter Hall.

SCHEDULE

FRIDAY OCTOBER 7TH

1400 - 1800 : Set up of the stands (*optional*)

SATURDAY OCTOBER 8TH

0730 - 1000 : Set up of the stands (swap, sale, cottage industry and clubs)

1000 - 1300 : Registration and set up of the models for the contest

1000 : Open to visitors

1600 : General meeting for the IPMS Belgium members

1800 : Doors closed

1900 : Banquet

SUNDAY OCTOBER 9TH

0900 - 1000 : Set up of the stands

0900 - 1000 : Registration and set up of the models for the contest, end at 10h00 sharp

1000 : Open to visitors

1700 - 1730 : Announcement of the contest results and super prize winner

1730 : End of activities and dismantling

Note : as the admission is not free and for security reasons, all stands must be set up by 10.00 hr at the latest on Saturday and Sunday. No dismantling will be allowed before 17.30 hr on Sunday. Thank you so much for your cooperation.

USEFUL ADDRESSES

Yves TAILDEMAN

Avenue du 112^{ème}, 49

B-1420 Braine-l'Alleud

E-mail : registration@plasticandsteel.be

Tel : 02/384.15.80 (from abroad : +32-2.384.15.80)

Michel POURBAIX (*contest only*)

Rue Fr Van Cutsemstraat 130 box 2

B-1140 Brussels

E-mail : contest@plasticandsteel.be

Tel (**after 17 hr !**) : 0477/769 521 (from abroad : +32-477 769 521)

HOTELS

Hôtel IBIS Aalst Centrum (15 min. away from Bellekouter)

Villalaan 20 à 9300 Aalst (sud),

Close to exit 19 on the motorway E40 (N45 direction Aalst)

Tel : 053/71.18.19 (+32-53.71.18.19)

Fax : 053/71.07.11 (+32-53.71.07.11)

www.ibishotel.com - H3155@accor-hotels.com

Hotel the new fox (5 min. from Bellekouter venue)

Brusselbaan 182, 1790 Affligem

Close to exit 19a on motorway E40

Tel. : 053/66.06.85

<http://www.thenewfox.be/hotel.php>

THE CONTEST

→→ Full contest rules available on www.plasticandsteel.be ←←

The contest is an "OPEN" one, thus everyone, being member or not of IPMS, can take part to it. Competing for the "IPMS Belgium Challenge" is however for IPMS Belgium members only.

To compete, every participant shall fill in the pre-registration form and return it to the secretariat not later than 25 September 2016.

The participation fees are printed hereafter and will be paid when final registration is done on Saturday morning or Sunday morning :

- IPMS members : € 1,50 /model Juniors : free of charge
- Non members : € 3,00 /model Juniors : free of charge
- Late registration : (after **25 Sep**) € 4,00 / model (€ 3 for IPMS members)

In order to inform the visitors and jury members on the original as well as on the model, competitors are kindly asked to display a card with some explanation next to the model (A5 format max, 21x15 cm).

Registration for the contest implies the acceptance of all the regulations.

THE SPECIAL AWARDS

- *Best of Show* for the first of the first
- *Best of Straight-From-The-Box* : Award donated by the president of IPMS Belgium
- *Challenge IPMS Belgium* : exclusively for IPMS Belgium members, see contest rules
- *PJ Production Award*
- *Thieffry Trophy* : Aviation from the early days up to 1929
- *Hamover Trophy* : **theme to be confirmed**
- *Modeller's Packages* donated by IPMS Belgium (raffle)
- *Best Egg plane* donated by RetrokiT/RetroWings

THE CATEGORIES

JUNIORS

Any scale, any type

- J1** Less than 10 years
- J2** 10 to less than 13 years
- J3** 13 to less than 16 years

AIRCRAFT

- A1** Civil, 1/144 & smaller
- A2** Civil, larger than 1/144
- A3** Military, prop(s), 1/72 & smaller
- A4** Military, jets, 1/72 & smaller
- A5** Military, prop(s), 1/48
- A6** Military, jets, 1/48
- A7** Military, prop(s) & jets, 1/35 & larger
- A8** Rotary wing(s), any scale
- A9** Vacu & scratch, any scale
- A10** Conversions, any scale
- A11** Dioramas, any scale
- A/SFB** Aviation "Straight from the Box"
- A/Egg** Egg-planes, any scale

MILITARY VEHICLES

- VM1** 1/72 & smaller
- VM2** 1/48
- VM3** Wheeled, 1/35 & larger
- VM4** Tracked, 1/35 & larger
- VM5** Scratch, any scale
- VM6** Conversions, any scale
- VM7** Dioramas, any scale
- VM/SFB** "Straight from the Box"

CIVILIAN VEHICLES

- VC1** Stock or competition, any scale
- VC2** Motorbikes, any scale
- VC3** Trucks, any scale
- VC4** Vacu, Scratch & Conversions, any scale
- VC5** Dioramas, any scale
- VC/SFB** "Straight from the Box"

FIGURES

- F1** 54 ~ 75 mm
- F2** 90 ~ 120 mm
- F3** Busts, any scale
- F4** Dioramas, any scale

SHIPS

- MA1** Any type, larger than 1/600
- MA2** Any type, 1/600 & smaller
- MA/SFB** "Straight from the Box"

COLLECTION

- COL** Minimum 4 models on a neutral base and at the same scale

SCIENCE-FICTION

- SF** Any scale, any type

MISCELLANEOUS & HUMOUR

- DIV** Any model which does not fit in a category above or of humorous nature.

OPEN

- OPN** Other material than plastic (cardboard, wood, etc)

Regularly check the www.plasticandsteel.be website
in order to be updated on the latest news !!!

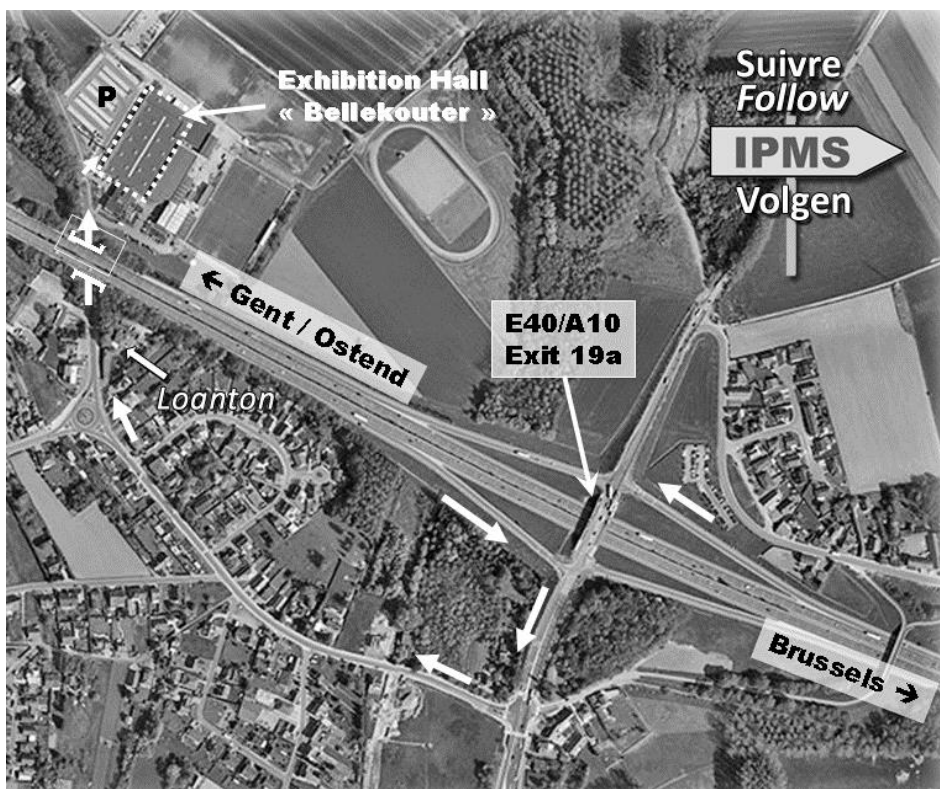
RESERVATIONS PLASTIC & STEEL

All reservations for clubs, traders, shops, swap, banquet,... must be made through our website www.plasticandsteel.be .

You will have to register first and once your registration has been accepted you can complete your registration, please respect maximum numbers of tables/meters if specified. If not your payment will be refunded, minus bankcosts. If in doubt please send us an e-mail.

No registration will be final until full payment is received.

HOW TO GET THERE



Colour map available on www.plasticandsteel.be

Bellekouter
Bellestraat 99
1790 Affligem

CONTEST REGISTRATION FORM

(Please print - photocopies allowed)

Last & first name : _____

Full address : _____

Tel : _____ **National** IPMS No *(if member)*: _____

Date of birth : _____ E-mail : _____

IPMS Belgium Challenge **X**

CATEGORY (CODE)	NAME / DESCRIPTION	↓	SCALE	RESERVED ADMIN.
	Size : x cm			
	Size : x cm			
	Size : x cm			
	Size : x cm			
	Size : x cm			
	Size : x cm			

By registering I accept all the rules of the contest.

Done in : _____ Date : _____ Signature : _____

RETURN THIS FORM TO & NOT LATER THAN 25 SEPTEMBER 2016

IPMS NC2016, c/o Yves TAILDEMAN, Avenue du 112^{ème}, 49 in B-1420 Braine-l'Alleud

E-mail : registration@plasticandsteel.be